

Jefferson City Jaycees Fair

4-H and FFA Exhibitor Handbook



Section 1 - About the fair

The fair is an event where the community gets to come together to celebrate the accomplishments of its citizens. Cole County 4-H and FFA members participate in the fair sponsored by the Jefferson City Jaycees. The fair is an opportunity for young people to exhibit their accomplishments, form friendships, develop independence, and demonstrate mastery.

Please remember, being a member of 4-H and FFA is about more than the fair. The fair is the culminating event for some members; however, the development and growth of our members is top priority for our organizations. It is an opportunity to:

- Extend learning opportunities related to the specific project and development/enhancement of life skills
- Evaluate level of members' accomplishments in both competitive and noncompetitive events
- Build friendships outside of local club/chapter
- Have fun!

The fair is traditionally held Monday through Saturday the week of July 31 and is held at the Jefferson City Jaycees Fairgrounds located at 1445 Fairgrounds Road, Jefferson City, MO 65109.

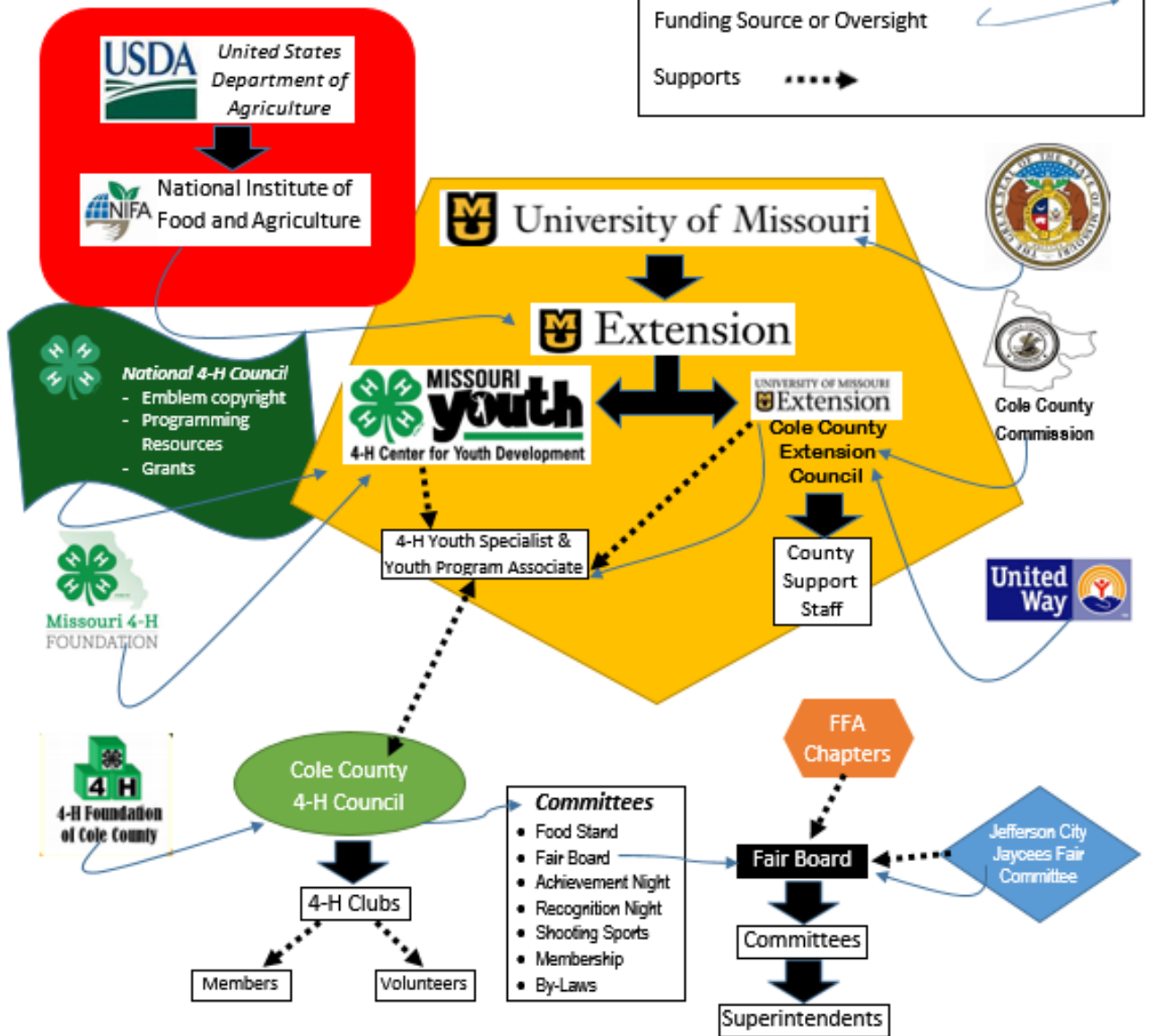
Some youth events are held prior to the week of the fair and at various locations. Be sure to review the schedule found under the fair link on the Cole County 4-H website (<https://extension2.missouri.edu/counties/cole/4-h>).

It would be simplistic to talk about the fair as merely an annual event; it is a "process" that takes place throughout the entire year.

Organizational Relationship

Legend:

- Direct Relationship
- Funding Source or Oversight
- Supports



Section 2 - Staff & Governing Groups

For more information about the Cole County 4-H Council and the University of Missouri Extension, Refer to the Cole County 4-H website for a link to the Cole County 4-H Family Handbook.

Jefferson City Jaycees

The Jefferson City Jaycees start planning for the next fair immediately after the conclusion of the current fair. This organization of volunteers are responsible for:

- the fairgrounds
- ticket sales
- contracting arena events
- contracting concerts
- contracting the midway
- contracting vendors including food and beverages.

Anyone who has never made a mistake
has never tried anything new. *A Einstein*

Cole County 4-H & FFA Fair Board

The Cole County 4-H & FFA Fair Board (Fair Board) was founded in September 1996 and the purpose is:

- To plan and coordinate the youth portion of the Jefferson City Jaycees' Fair;
- To provide a safe environment for all the exhibitors, animals and exhibits during their stay at the fair;
- To improve the quality of club projects made by the youth;
- To encourage cooperation among all youth of the county;
- To maintain the youth's interest in improving the quality of projects, experiences, and enterprises as well as the general quality of life in Cole County.

The goal of the Fair Board is to plan and implement the youth and livestock activities at the fair. For most 4-H and FFA members, this is the culmination of hard work with their projects throughout the current year with the opportunity to have their exhibits and animals to be judged and displayed.

The Cole County 4-H/FFA Fair Board operates as a committee under the Cole County 4-H Council. It is responsible for:

- planning the exhibit hall
- animal shows
- livestock auction
- ham/bacon auction
- contests: fashion revue, public speaking, shooting sports, etc.

The 4-H food stand is managed by the Cole County 4-H Council which is comprised of representatives from each 4-H club in Cole County.

2019-2020 Officers:

- President: Jeff Suthoff, Blair Oaks FFA
- Vice-President: Greg Holtgrewe, Stringtown-Corinth 4-H Club
- Secretary: Sonya Forck, Volunteer
- Treasurer: Cindy Hassler, Volunteer
- Committee Chairs:
 - Exhibit Building: Jennifer Borgmeyer, St. Thomas 4-H
 - Livestock: Erin Carl, Nichols Career Center FFA
 - Miscellaneous: Marie Shafer, Clover Crusaders 4-H
 - Small Animals: Misty Schroeder, Stringtown-Corinth 4-H
 - Constitution/By-laws & Finance/Marketing: Janice Loesch, Stringtown-Corinth 4-H
 - Shooting Sports: Don Schwartze, Volunteer

Cole County 4-H & FFA Fair Board Meeting Dates:

The Fair Board meeting dates and locations varies, please contact your club leader for the dates, or visit the website.

Section 3 - Responsibilities of Members, Parents, and Volunteers

Participation in the fair

The fair is a family-friendly event. However, some events may require membership in a Cole County 4-H club or an FFA chapter from a school in Cole County. Please check the rules for any participation requirements.

It takes a village to make the fair possible. With the cooperation of the Jefferson City Jaycees, Cole County 4-H and Cole County FFA chapters, the fair gives everyone in the community an opportunity to showcase their talents and project work. It takes uncountable hours of committee meetings, project meetings, parking discussions, phone calls, letters, marketing, securing donations, and board meetings throughout the year.

The fair you attend may not be the fair you grew up with or even look the same as last year.

Responsibilities

Parents & Volunteers

Volunteers are the backbone of the fair. Contact your respective organization to see how to become involved.

- Jefferson City Jaycees
- Cole County 4-H - <https://extension2.missouri.edu/counties/cole/4-h>
- FFA – Contact your middle or high school.

The fair is probably the most visible event conducted by 4-H and FFA. Each volunteers should:

- Provide a safe environment.
- Strive to be a positive role model.
- Work as a team player for the good of all persons.
 - Work cooperatively with other adult volunteers.
 - Abide by the policies and procedures as determined by the Cole County 4-H Council, the Cole County 4-H/FFA Fair Board, and the Jefferson City Jaycees.
- Stay informed.
- Attend club/chapter/project meetings.
- Be active and volunteer to help. The more you give, the more you get in return.
- Help others – be supportive, encouraging, and helpful.
- Make sure you are aware of deadlines and rules and FOLLOW them.
- Understand that you are part of an organization that is larger than you, your family, your club/chapter, and the fair.
- Encourage all participants.
- Participate in Fundraisers to keep the fair thriving and growing.

Youth

To be eligible for premiums and awards, youth must:

- Participate in a fair work day as approved by the Cole County 4-H/FFA Fair Board
- Be a member-in-good-standing with your respective organization
- Other requirements as outlined by your respective club/chapter
- Invite buyers to sale events (if selling market animal, country cured ham, or country cured bacon)
- Participate in a fair work day
- Pay all fees in a timely manner
- Attend exhibitor meeting for your species
- Attend seller meeting if selling an animal
- Sign a feed withdrawal waiver if selling an animal.

Section 4- FAQ's (Frequently Asked Questions)

What is the big deal about the fair?

Fairs, contests, and competitions are often the highlight of the 4-H year. Participation in the fair is not mandatory nor required to complete a project. Although competition is part of the 4-H program, the real benefit comes from learning, not from winning. Skills learned and friendships made in 4-H will long outlast any ribbons and trophies won.

From a youth development perspective, fairs allow 4-H members to display projects and to participate in educational experiences critiqued by an adult expert. Fairs, contests, and competitions provide opportunities for 4-H members to demonstrate new knowledge, abilities, skills, and attitudes. These events also provide a showcase for recognition of youth and allow an avenue for members to practice the life skills of teamwork, cooperation, communication, sportsmanship, as well as club pride and unity.

How do I enter my projects and/or animals for the county fair?

We use an online registration system. More information is on the fair webpage on the Cole County 4-H website (<https://extension2.missouri.edu/counties/cole/4-h>).

How many items may I bring to the fair?

Check the rules because each area has its own entry limits.

For the exhibit building, you will want to bring the items that show your BEST work in the project work for the current year.

What if I don't know what items I want to enter in the Exhibit Building yet?

All items pre-registered are eligible for selection to advance for display at the Missouri State Fair. We encourage you to pre-register your item(s) with the description of "TBD". Contact the office once you know the description of your item(s).

When do we bring items to the fair?

Exhibit Building: Check the rules and schedule; typically, Saturday morning prior to the fair's opening day.
Animals: Check the rules and schedule for time to be on the fairgrounds, time to check-in and/or weigh-in, show time, and release time.

When do we pick up our item(s) from the Exhibit Building?

Varies. Check the rules, website (<https://extension2.missouri.edu/counties/cole/4-h>), or ask your club leader.

How are Exhibit Building items judged?

Members participate in Conference Judging. This provides an opportunity for the 4-H member and judge to review together the item or presentation to be evaluated. The member and judge discuss the strong and weak points and how the exhibit might be improved. This procedure gives the member a greater sense of personal involvement. Project work becomes more educational when the member has a part in the evaluation process. Constructive feedback helps the member gain additional knowledge and skills.

Animal Projects

What are the requirements for animal projects?

One of the objectives in owning an animal is to learn new skills in animal breeding, feeding, management, and health. To accomplish this, the member should secure the animal as early in the year as possible. Livestock shows and exhibitions set up minimum dates for length of ownership necessary for exhibition.

Members must complete the appropriate level of Show-Me Quality Assurance program (SMQA) before June 1. Information will be sent in February regarding your current status along with training opportunities.

Follow the requirements and deadlines for the species you wish to show.

Other Fairs, Contests & Clinics

EVENT	LOCATION	TIME
Osage County Fair	Linn	July
Callaway Youth Expo	Auxvasse	July
Miller County Fair	Eldon	July
Moniteau County Fair	California	August
AKSARBEN Stock Show	Grand Island, NE	September
Missouri State Fair	Sedalia	August

Country Cured Hams and Bacon

My ham and/or bacon received a blue ribbon, what do I need to do now?

Congratulations! You may sell one item at the Ham & Bacon Auction. If you have a blue ribbon ham and a blue ribbon bacon, you will be contacted by fair personnel to determine which one you want to sell. If you have two of one type, the highest scoring item will be on the auction list.

Check the rules for the Ham & Bacon Auction.

My ham and/or bacon didn't receive a blue ribbon. What do I need to do now?

Your ham and/or bacon must remain on display until designated check out time. In special circumstances, the Superintendent might call you to pick up your item early. Check the rules for the Ham & Bacon Auction.

Fashion Revue

What is Fashion Revue?

Fashion Revue is a competitive contest for members enrolled in clothing, crochet, and knitting projects. Members will have the opportunity to demonstrate skills and knowledge of clothing and textile construction and consumerism through modeling items they have made. This is a qualifying contest for the Missouri 4-H Fashion Revue.

- Usually held prior to fair week (mid-July)
- Must be a wearable item to be eligible for Missouri 4-H Fashion Revue selection.

There is another contest. Tell me about the Fashion Fun Contest.

This is a fun contest for 4-H Clover Kids, 4-H members, and FFA members that might not be ready to compete in Fashion Revue. Participants may enroll in any project. Youth have the opportunity to practice dressing and grooming for the "total" look, as well as learning to project a smile, enthusiasm, charm and poise, and help build self-confidence.

Shooting Sports

How do I sign up for the Shooting Sports Match?

Check the rules for the Shooting Sports Match. You will be able to select a time to shoot for your discipline.

- Open to 4-H members enrolled in a shooting sports discipline under the guidance of a 4-H certified instructor.
- Usually held prior to the fair (mid-July)
- Must complete required hours of instruction and submit form signed by certified instructor.
- Ammunition not provided.
- Typically follows Missouri 4-H Shooting Sports Match rules.

Section 5- Policies and Procedures

ANIMALS:

- 1) Stall spaces are assigned by Livestock Committee. Limited space is available and the livestock committee tries to accommodate all exhibitors.
- 2) Have current Show Me Quality Assurance (SMQA) certification by June 1.
- 3) Know the health requirements for exhibiting your species. Have health papers with you as necessary. More information can be found at Missouri State Fair's Premium Guide (Animal Health Requirements).
- 4) Animals must have proper identification for your species (ear tag, ear notch, tattoo, leg band, scrapie tag, etc.)

AUCTIONS:

- 1) Each seller is responsible for contacting buyers and submitting list to Cole County 4-H Office.
- 2) Complete the Buyer Contact List with the buyers you wish to invite and return by July 10. Only buyer names on this will receive fair information and gate pass (limited quantities available).

Livestock Auction

- 1) Typically, held Wednesday evening of fair week.
- 2) Cole County 4-H and FFA exhibitors may sell only one (1) animal.

Ham and Bacon Auction

- 1) Typically, held Friday morning of fair week.
- 2) Only blue ribbon hams and slabs of bacon are eligible.
- 3) Cole County 4-H and FFA exhibitors may sell only one (1) ham or one (1) slab of bacon.
- 4) Auction is limited to approximately 75 items.

Section 6- Project General Information & Hints

ANIMALS (General Hints):

- 1) Work with your animal. Bond with it so that it trusts you. Expose your animal to all the noises and distractions that might cause problems during the fair. Take your animal on a ride prior to the fair.
- 2) Begin halter breaking/breaking to lead early. The earlier you start, the easier it is for you and your animal.
- 3) Begin exposing your animal to tools and equipment used early.
- 4) Practice showmanship. Have the correct tools for your species.
- 5) Desensitize your project animal to other species.
- 6) Practice washing and prepping your animal prior to arriving at the fair.
- 7) Observe biosecurity measures before, during, and after the show.
- 8) Market animals must be weighed on published dates to declare project animal and be eligible for Average Daily Gain awards.

BEEF:

- No animals with horns/scurs more than 3 inches.

Market Animals

- Typically, show is Monday evening of fair week.
- Market steers and market heifers must have been born in the previous year (for example: an animal exhibiting at the 2020 fair must be born in 2019).
- Market steers must be castrated prior to weigh-in.
- Weigh-in:
 - Typically, weigh-in is held in early March at Lincoln University's Busby Farm.
 - There is no minimum weight; however, suggested beginning weight between 600-750 pounds.
 - Must attend as published by the Cole County 4-H/FFA Fair Board to be eligible to sell.
 - Animals should be broke to lead.
 - Each exhibitor may weigh-in three (3) animals; however, only two (2) are allowed to be exhibited and only one (1) sold at the fair.
- Animals must weigh a minimum of 900 pounds at final weigh-in at the fair to participate in the auction.

Breeding Animals

- Typically, show is Tuesday morning of fair week.
- Ownership date is June 1.
- Registration papers are required in the exhibitor/farm name to exhibit in a breed class. All other animals will be in a crossbred class.
- Bulls over 6 months of age must have nose lead.

DOGS:

4-H/FFA Dog Show

- Typically, show is Saturday evening of fair week.
- Ownership date is April 1.
- Must have a Veterinarian Health Certificate or Certificate of vaccinations for rabies, parvo, and distemper from a licensed veterinarian.
- Female dogs in season are not allowed to show.

Fun Dog Show

- Open to Clover Kids, 4-H members, FFA members, and public.

EQUINE:

- Must submit Horse Enrollment Form by due date as published by the Cole County 4-H/FFA Fair Board to be eligible to participate.
- Have negative coggins test.
- Show is typically held in mid-July prior to fair week.
- For safety reasons, no stallions are allowed at 4-H/FFA Shows.

EXHIBIT BUILDING ENTRIES:

- Items must be pre-registered to receive premiums and eligible for Missouri State Fair 4-H Building selection.
- Items leaving prior to designated checkout time will not receive premiums.
- Refer to fair book for dimensions of posters, educational displays, photographs, etc.
- Exhibitors are to bring their items on Saturday morning prior to fair week during designated check-in times. Members of 4-H clubs will participate in Conference Judging.
- Missouri State Fair Selection (4-H exhibits only):
 - Exhibitors with multiple items selected for Missouri State Fair exhibition may send no more than two (2) items.
 - If an exhibitor has more than two (2) items, let 4-H staff know later than noon on Thursday of fair week which two (2) items you will be sending.
 - Items selected for exhibit at Missouri State Fair typically remain at the fairgrounds. Members of the 4-H staff will transport items to the 4-H Building at designated time.
 - Exhibitors are encouraged to replace vegetables and baked goods.
 - Exhibitors may be asked to send a picture for large or fragile items.
 - Exhibitors are encouraged to bring packing material for fragile items.

Country Cured Ham

- Hams are usually acquired in January. Cole County partners with Burgers Smokehouse in California for purchase of hams. Orders are due prior to the school's winter break.
- Hams must be hung and remain in the "cure" for 90 days. Typically, in April, you will want to remove the cure and continue to hang the ham until time for exhibition.
- Each exhibitor may bring up to two (2) hams to the Exhibit Building on Saturday morning during designated check-in times prior to fair week. Exhibitors may choose to participate in conference judging.

Country Cured Bacon

- Slabs of bacon are usually acquired in July. Cole County has partnered with The Covered Bridge Market in Russellville (formerly Russellville Locker) for the last several years. Orders must be placed at end of June.
- Slabs of bacon must remain in the “cure” for 7-10 days before hanging the bacon until time for exhibition.
- Each exhibitor may bring one (1) slab of bacon to the Exhibit Building on Saturday morning during designated check-in times prior to fair week. Exhibitors may choose to participate in conference judging.

GOATS:

Market Animals

- Typically, show is Tuesday evening of fair week.
- Market wethers must be less than 12 months old at show date.
- Market wethers must be castrated prior to weigh-in.
- Weigh-in:
 - Typically, weigh-in is held the first weekend of May on your own.
 - There is no minimum weight; however, suggested beginning weight between 30-50 pounds.
 - Must submit weigh-in form by due date as published by the Cole County 4-H/FFA Fair Board to be eligible to sell.
 - Each exhibitor may weigh-in five (5) animals; however, only two (2) are allowed to be exhibited and only one (1) sold at the fair.
- Animals must weigh a minimum of 40 pounds at final weigh-in at the fair to participate in the auction.

Breeding Animals

- Typically, show is Thursday afternoon of fair week.
- Ownership date is June 1.
- Registration papers are required in the exhibitor/farm name to exhibit in a breed class. All other animals will be in a crossbred class.

POULTRY:

Market Animals

- Typically, show is Monday evening of fair week.
- Ownership date June 30.
- Animal weights and ages.
 - Market Broilers, 3 to 5 pounds, less than 70 days
 - Market Ducks, 3 to 5 pounds, at least 90 days
 - Market Turkey, 20 to 25 pounds, approximately 16 to 20 weeks
- Exhibitors may sell one (1) item. Poultry are shown as:
 - Chickens: Single Broiler or Pen of 4
 - Ducks: Single Duck
 - Turkey: Single Turkey
- Negative pullorum test required.

Breeding Animals

- Typically, show is Friday evening of fair week.
- Negative pullorum test required.
- Leg band for identification purposes are recommended.
- Ownership date is June 1.

RABBITS:

Market Animals

- Typically, show is Monday evening of fair week.
- Market rabbits must have been born _____ (for example: an animal exhibiting at the 2020 fair must be born _____).
- Animals must weigh between 3 pounds but no more than 5.5 pounds at the fair to participate in the auction.
- Ownership date is June 30.
- Rabbits are shown in a pen of three (3) animals.
- Meat pens consist of three rabbits, all of the same breed and variety. If the pen is from a breed having a broken color variety, the entire pen should be of the same color variety. A meat pen does not necessarily have to come from the same litter.
- Exhibitors may sell one (1) pen.

Breeding Animals

- Typically, show is Friday evening of fair week.
- Ownership date is June 1.
- Each exhibitor is limited to 30 head with no more than five (5) entries per class.

SHEEP:

Market Animals

- Typically, show is Tuesday evening of fair week.
- Market wethers must be less than 12 months old at show date.
- Market wethers must be castrated prior to weigh-in.
- Weigh-in:
 - Typically, weigh-in is held the first weekend of May on your own.
 - There is no minimum weight; however, suggested beginning weight between 50-70 pounds.
 - Must submit weigh-in form by due date as published by the Cole County 4-H/FFA Fair Board to be eligible to sell.
 - Each exhibitor may weigh-in five (5) animals; however, only two (2) are allowed to be exhibited and only one (1) sold at the fair.
- Animals must weigh a minimum of 90 pounds for wool-type and 50 pounds for hair-type at final weigh-in at the fair to participate in the auction.

Breeding Animals

- Typically, show is Thursday afternoon of fair week.
- Ownership date is June 1.
- Registration papers are required in the exhibitor/farm name to exhibit in a breed class. All other animals will be in a crossbred class.

SWINE:

Market Animals

- Typically, show is Tuesday evening of fair week.
- Market barrows and market gilts must have been born _____ (for example: an animal exhibiting at the 2020 fair must be born _____).
- Weigh-in:
 - Typically, weigh-in occurs mid- to late-April.
 - Weigh-in animals on your own.
 - Market barrows must be castrated prior to weigh-in.
 - There is no minimum weight, but suggested beginning weight between 70-100 pounds.
 - Must submit weigh-in form by due date as published by the Cole County 4-H/FFA Fair Board to be eligible to sell.
 - Each exhibitor may weigh-in five (5) animals; however, only two (2) are allowed to be exhibited and only one (1) sold at the fair.
- Animals must weigh a minimum of 230 pounds at final weigh-in at the fair to participate in the auction.
- Carcass contest will be calculated using the 2-point system.

Breeding Animals

- Registration papers are required in the exhibitor/farm name to exhibit in a breed class. All other animals will be in a crossbred class.

Section 7- Timeline

Fall

- Join respective organization
- Attend club/chapter/project meetings
- 4-H: select projects
- Beef: select market animal(s) and begin halter breaking/breaking to lead
- December:
 - Order hams

Winter

- Attend SMQA Training (in-person or online: <http://www.agebb.missouri.edu/smqa/>)
- Continue to attend club/chapter/project meetings
- January:
 - Pick-up hams; place in cure; hang
- Feb/Mar:
 - Beef: Weigh-in for Market Beef

Spring

- Continue to attend club/chapter/project meetings
- April:
 - Swine: Select market animal(s); Weigh-in for market hogs
 - Sheep: Select market animal(s)
 - Goats: Select market animal(s)
- May:
 - Sheep: Weigh-in for market lambs
 - Goats: Weigh-in for market goats

Summer

- Continue to attend club/chapter/project meetings
- Beef: continue with leading animal; begin exposing to tools and equipment used; prep for shows
- June:
 - Register for the fair
 -
- July:
 - Fair Month

Ownership Dates

There are specific dates of ownership for Cole County and Missouri State Fair as follows:

Species	Ownership Date (County)	Weigh-in Date	Ownership Date (Mo State Fair)
Beef Cattle:			
Steers & market heifers	by weigh-in date	Saturday in early March	March 1
Breeding animals	June 1		June 1
Bucket Calf	June 1		N/A
Dairy Cattle:			
Breeding animals	N/A		June 1
Sheep:			
Market lambs	by weigh-in date	1 st weekend in May	June 1
Breeding animals	June 1		July 1
Swine:			
Market hogs	by weigh-in date	3 rd weekend in April	90 days before show date
Breeding animals	June 1		90 days before show date
Breeding boars	Since farrowing		Since farrowing
Goats:			
Meat goats	by weigh-in date	1 st weekend in May	June 1
Breeding animals	June 1		N/A
Dairy goats	June 1		June 1
Poultry:			
Market poultry			
Meat Pen	before July 1		5-10 weeks prior to show
Roasters	before July 1		8-10 weeks prior to show
Broilers	less than 70 days		6-8 weeks prior to show
Fryers	before July 1		5-10 weeks prior to show
Ducks	at least 90 days		N/A
Turkey	approx. 16-20 weeks		N/A
Breeding animals	before July 1		N/A
Rabbits:			
Market rabbits	6-10 weeks prior to show		June 1
Breeding animals	June 1		June 1
Horses			
	May 1		May 1
Dogs			
	April 1		April 1

Section 8-Glossary of Terms

4-H State Fair project

After the conference judging period has concluded, judges will evaluate projects for possible exhibition in the 4-H building at the Missouri State Fair.

Auction

Exhibitors with a market animal, country cured ham, or country cured bacon may be allowed to sell their product at a fair auction. Exhibitors are responsible for bringing buyers to the event. Remember: the fair auction is a privilege—not a right.

- Livestock Auction – Traditional Sale Option
- Livestock Auction – Premium Only Sale Option

Average Daily Gain/Rate of Gain (ADG)

Market livestock weigh in to establish a beginning weight for the contest. The final weight is taken at the fair. The total gain in weight is then divided by the number of days since the beginning weight was taken to obtain an Average Daily Gain (ADG). This rate of gain, coupled with carcass data, and the visual appraisal of the animal by a judge in the ring can be a solid indication of the overall genetic quality of the market animal and the care and management of that animal by the exhibitor. Calculated as (final weight *minus* beginning weight) *divided by* (final weight date *minus* beginning weight date).

Conference judging

Members participate in Conference Judging. This provides an opportunity for the 4-H member and judge to review together the item or presentation to be evaluated. The member and judge discuss the strong and weak points and how the exhibit might be improved. The judge not only considers the workmanship and quality of the exhibit, but also the age and experience of the member that resulted in the exhibit(s) under consideration. This procedure gives the member a greater sense of personal involvement. Project work becomes more educational when the member has a part in the evaluation process. Constructive feedback helps the member gain additional knowledge and skills.

Danish system

The Danish system is a method of evaluation where a product or process is evaluated against a set of standards, and recognition is awarded on the degree to which the standard has been met by each competitor. In our “modified” Danish system judging, the exhibitors (ages 8-18) are not judged against each other. Each exhibit is judged according to a member’s age and years of experience in the project and receives a ribbon accordingly:

- Blue: Exhibit meets all standards well
- Red: Exhibit meets some standards, but could use improvement
- White: Exhibit needs improvement on many standards/missing critical information.

Entry

Item in the exhibit building or an animal entered in the fair.

Entry fee

Amount charged to exhibit an item/animal at the fair.

Exhibit tag

Identification tag available at Exhibit Building check-in to identify the item.

Exhibit building

Concrete building where non-animal exhibits are displayed during the week of the fair.

Exhibitor

Person/member who will be exhibiting items/animals at the fair.

FFA State Fair project

Contact your FFA Advisor for procedures on exhibiting your items at the Missouri State Fair.

Floor Price

A fair market value for a market animal. Your Cole County 4-H/FFA livestock committee works hard to garner the best price per pound from area livestock auction houses and/or individuals.

Gate fee/pass

Money paid for the opportunity to exhibit, participate, or view fair attractions. Gate fees/passes are determined by the Jefferson City Jaycees. Families of 4-H and FFA members typically have the opportunity to purchase passes for their immediate family at time of registration.

Nose printing & DNA sampling

The Missouri State Fair requires that market animals for possible exhibition at the Missouri State Fair must be nose printed locally and have those nose prints submitted to the state fair by the published deadline (Market Beef=March 15, Market Lambs/Goats=June 15). Additional, swine must have blood samples drawn and submitted for possible DNA confirmation prior to May 15.

Premium (fair)

Money distributed to exhibitors who are members in good standing with their 4-H Club/FFA Chapter. Check with your club leader or FFA Advisor for the requirements. For the Jefferson City Jaycees' Fair, exhibitors receive points based on the ribbon received (see Danish System) as outlined in the fair book for each item/animal exhibited. Fair Board has an allotment of funds available and assigns a "price per point" for which premium checks are calculated. Check fair rules on the website.

Resale

The process of selling an entry more than one time during the auction. The buyer of the item determines whether the item is offered for resale. The buyer determines where the proceeds from the resale will be distributed (typically, a charitable organization).

Ribbon

An award given to an exhibit in the form of a colored ribbon.

Reciprocal fair/county/show

Our fair allows 4-H and FFA members from other counties to exhibit livestock if their home county allows Cole County members to exhibit at their fair. The fairs are reciprocal in terms of eligibility to show at both fairs.

Show Me Quality Assurance (SMQA)

In order for members to exhibit at the fair and at the Missouri State Fair, 4-H and FFA members must be a “member in good standing”. For 4-H members in the beef, sheep, swine, dairy, rabbit, poultry, and goat projects, that includes having completed SMQA training and be current in the certification within the program. Contact your local Extension Office for more details about your current certification status. More information about the Show Me Quality Assurance program and training can be found at

<https://extension2.missouri.edu/programs/missouri-4-h/4-h-opportunities/4-h-ag-events/4-h-food-quality-assurance-policy>.

State Fair

The Cole County 4-H/FFA Fair Board tries to mirror rules and exhibit guidelines as close as possible to exhibition requirements for the Missouri State Fair. However, Missouri State Fair rules may not apply to our fair. The Cole County 4-H/FFA Fair Board evaluates rules to make sure they focus on Positive Youth Development.

Ultrasound/SonoRay

The term may vary from species to species, but the process and intent is the same. An ultrasound device measures the actual animal carcass attributes, such as the size of the loin eye, back fat thickness, and other items.

Volunteer

An adult (18 or older) who has enrolled in 4HOnline (<https://mo.4honline.com>), completed a background check, and completed Volunteer Orientation. Volunteers can be project leaders, club leaders, representative on a board, provide transportation for members, or help at club and project meetings. Recognized volunteers are covered by the Missouri 4-H Accident Insurance program and University of Missouri’s Risk Liability insurance policy.

Weigh-in

Market animals (beef, goats, sheep, and swine) must weigh their project animal(s) at the designated time as announced by the Fair Board and return paperwork with appropriate signature to the Extension Office to be eligible to sell, considered for sale champion/in-county awards, or receive premiums. This is a requirement for completing a market livestock project.

Work Day

Each exhibitor must participate in a work day as published by the Cole County 4-H/FFA Fair Board or participate in a work day approved by a fair superintendent to be eligible to receive awards and premiums at the fair.